

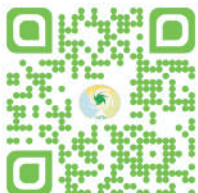
## DOWNLOAD THE APP



RBS



EMS



RIFC



PIFC



GIFC



TIFC

- Scan the QR Codes
- Download & Install the apps
- Start using apps as per need
- These are also web enabled through <http://www.ncipm.org.in/nicra/Softwaretools.aspx>
- Look for updated version, Reinstall the apps

- Facilitates prediction of insect pest dynamics for the current and future climatic periods relating to emission scenario database of Intergovernmental Panel on Climate Change (IPCC).
- Issue of 'pest alerts' to crop growers.
- Potential stakeholders - researchers, extension agents & farmers.
- 158 insecticides & 101 fungicides are recommended for pest management on four target crops.
- Application of insecticides and fungicides is through seed & seedling treatment, soil drenching and foliar application (<http://www.cibrc.nic.in>).

### DEVELOPED BY

Vennila S., Ankur Tomar, Satish Kumar Yadav, Puran Chand, Mobin Ahmad, Alpana Kumari, Arjit Saha, Pradeep Prajapathi & Abhinav Singh

### PUBLISHED BY

DIRECTOR

ICAR-National Research Centre for Integrated Pest Management

Lal Bahadur Shastri Building, Pusa Campus, New Delhi-110012



[ipmnet@ncipm.org.in](mailto:ipmnet@ncipm.org.in)  
[svennila96@gmail.com](mailto:svennila96@gmail.com)



FOR MORE DETAILS

VISIT US

<http://www.ncipm.org.in/nicra>

# Android Apps for Insect Pest & Disease Management



Rice



Pigeonpea



Groundnut



Tomato



NCIPM



## Insecticide & Fungicide Calculators (IFCs)

### Rice

- 08 Bio-insecticides
- 74 Chemical-insecticides
- 03 Bio-fungicides
- 37 Chemical-fungicides

### Pigeonpea

- 08 Bio-insecticides
- 19 Chemical-insecticides
- 02 Bio-fungicides
- 01 Chemical-fungicide

### Groundnut

- 17 Chemical-insecticides
- 02 Bio-fungicides
- 21 Chemical-fungicides

### Tomato

- 08 Bio-insecticides
- 24 Chemical-insecticides
- 10 Bio-fungicides
- 25 Chemical-fungicides

IFCs are designed to assist researchers, extension personnel and farmers for judicious selection and use of pesticides with label claims.

## PESTPREDICT



- ‘PESTPREDICT’ is a mobile based application making weather based pest forewarning as a component of Integrated Pest Management in the area of crop protection.
- Approaches to forewarning
  - Rule based prediction system (RBS)
  - Empirical model based system (EMS)
- Validated forecast models of insect pests and diseases are built in the ‘PESTPREDICT’.

Contributors to the pest weather database for target crops from different locations are gratefully acknowledged



## Rule Based Predictions

### RICE



Yellow Stem Borer



Brown Plant Hopper



Green Leaf Hopper



Leaf Folder



White Backed Plant Hopper



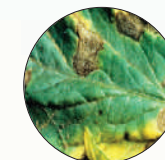
Caseworm

### GROUNDNUT



Tobacco Caterpillar

### TOMATO



Early Leaf Blight

## Prediction Based on Empirical Models

Crop	Insect	Beneficial	Disease
Rice	10	01	04
Pigeonpea	06	02	05
Groundnut	06	01	04
Tomato	07	01	11

### Caution:

Accuracy of ‘PESTPREDICT’ depends on quality of weather inputs  
&  
varies depending on other biotic variables or extremes of weather events